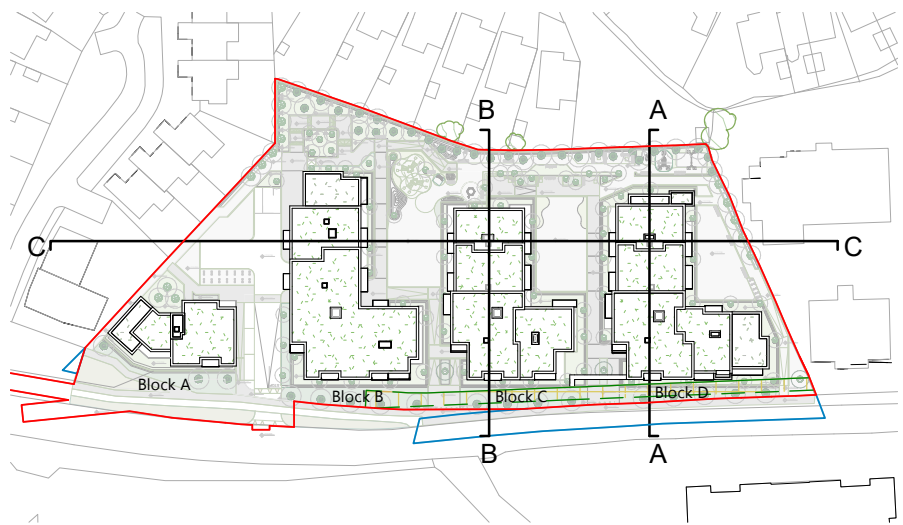




Section C-C
1 : 200



<h1>PLANNING</h1>		<div><div><div>COMMUNAL SPACES</div><div>1 BED</div><div>2 BED (3 PERSON)</div></div><div><div>2 BED (4 PERSON)</div><div>3 BED</div></div></div> <div><div>BOUNDARY LINE - SITE SUBJECT TO APPLICATION</div><div>SITE IN OWNERSHIP OF APPLICANT - NOT SUBJECT TO APPLICATION</div><div>BUILDINGS TO BE DEMOLISHED</div></div> <div><div>AREA INDICATED AS REQUIRED BY DLRC FOR TEMPORARY WORKING SPACE</div><div>LINE OF CPO ROAD EXPANSION</div></div>	<div><div>Commencement of Stage: APR 2022</div><div>Drawn by: CC / MW</div><div>Checked: MW</div><div>OSI licence no.: AR 0106322</div><div>OSI map ref. no.: 3455-03</div><div>Levels: relative to OS datum</div></div> <div><div>PROJECT: 533 - Sandyford Road</div><div>STAGE: Planning</div><div>DRAWING: Proposed Section</div><div>DWG No.: 533-HRA-00-ZZ-DR-A-P-0502</div><div>SCALE@A1: As indicated</div><div>Rev.: </div></div> <div><div>horan rainsford architects</div><div>36 Main St Blackrock Dublin A94 E8H1</div><div>(353) 1 764 2404 info@horanrainsford.ie www.horanrainsford.ie</div><div>PRACTICE MEMBER RIA</div></div>
REV. DATE	DETAILS	LEGEND	KEYPLAN

© HORAN RAINSFORD Architects | do not scale from drawing | use figured dimensions only | notify architect of discrepancies